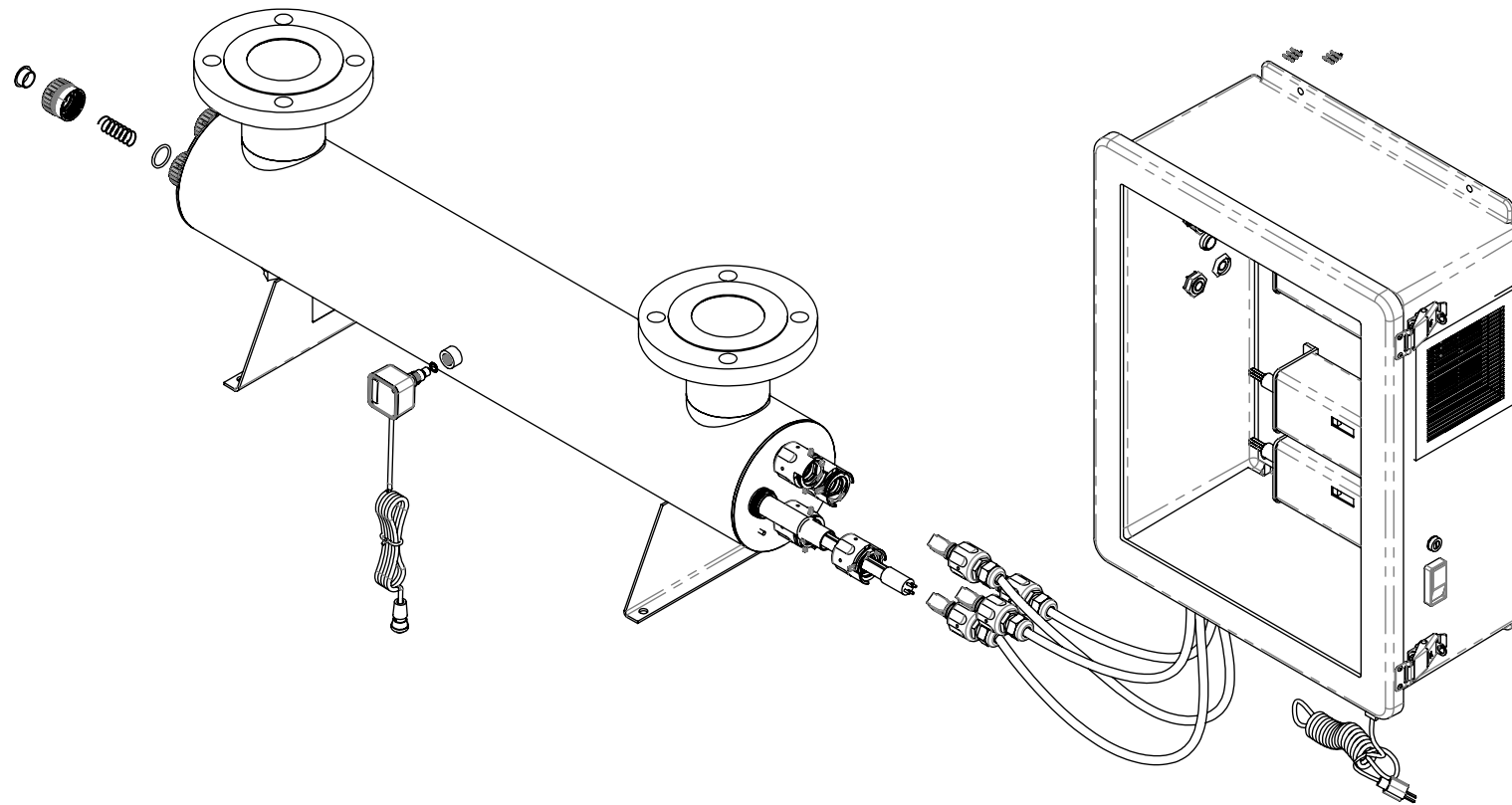


**NOT FOR PRODUCTION USE**

| REV | SHT | ZONE | REVISION DESCRIPTION  | LOG NO. | REV BY | CHK BY | APPD BY | DATE<br>YYYY-MM-DD |
|-----|-----|------|---|---------|--------|--------|---------|--------------------|
| J   |     |      | NO VISIBLE CHANGES TO THE DRAWING. BOM CHANGE IN ERP SYSTEM - WASHER 602928 QTY. 2 ADDED TO THE BOM | 17-R177 | RI     | AMB    | RC      | 2017-07-19         |

| P/N         | DESCRIPTION                             | LAMP REPL. P/N | QUARTZ REPL. | CONTROLLER REPL. | CONTROLLER REPL. | SENSOR REPL. | POWER CORD  |
|-------------|---|----------------|--------------|------------------|------------------|--------------|-------------|
| SHF-140     | SYS, 143GPM PROFESSIONAL 120VAC         | S740RL-4C      | QS-012       | BA-ICE-HF        | N/A              | N/A          | 260223R-001 |
| SHF-140/2   | SYS, 143GPM PROFESSIONAL 230V CEE7/7    | S740RL-4C      | QS-012       | BA-ICE-HF        | N/A              | N/A          | 260223R-002 |
| SHF-140/2A  | SYS, 143GPM PROFESSIONAL 230VAC AS3112  | S740RL-4C      | QS-012       | BA-ICE-HF        | N/A              | N/A          | 260223R-003 |
| SHF-140/2B  | SYS, 143GPM PROFESSIONAL 230V BS1363    | S740RL-4C      | QS-012       | BA-ICE-HF        | N/A              | N/A          | 260223R-004 |
| SHFM-140    | SYS, 143GPM PROFESSIONAL + 120VAC       | S740RL-4C      | QS-012       | BA-ICE-HF        | BA-ICE-M-HF      | 254NM-HF     | 260223R-001 |
| SHFM-140/2  | SYS, 143GPM PROFESSIONAL+ 230V CEE7/7   | S740RL-4C      | QS-012       | BA-ICE-HF        | BA-ICE-M-HF      | 254NM-HF     | 260223R-002 |
| SHFM-140/2A | SYS, 143GPM PROFESSIONAL+ 230VAC AS3112 | S740RL-4C      | QS-012       | BA-ICE-HF        | BA-ICE-M-HF      | 254NM-HF     | 260223R-003 |
| SHFM-140/2B | SYS, 143GPM PROFESSIONAL+ 230V BS1363   | S740RL-4C      | QS-012       | BA-ICE-HF        | BA-ICE-M-HF      | 254NM-HF     | 260223R-004 |
| SHF-180     | SYS, 183GPM PROFESSIONAL 120VAC         | S950RL-4C      | QS-180       | BA-ICE-HF        | N/A              | N/A          | 260223R-001 |
| SHF-180/2   | SYS, 183GPM PROFESSIONAL 230V           | S950RL-4C      | QS-180       | BA-ICE-HF        | N/A              | N/A          | 260223R-002 |
| SHF-180/2A  | SYS, 183GPM PROFESSIONAL+ 230V AS3112   | S950RL-4C      | QS-180       | BA-ICE-HF        | N/A              | N/A          | 260223R-003 |
| SHF-180/2B  | SYS, 183GPM PROFESSIONAL+ 230V BS1363   | S950RL-4C      | QS-180       | BA-ICE-HF        | N/A              | N/A          | 260223R-004 |
| SHFM-180    | SYS, 183GPM PROFESSIONAL+ 120VAC        | S950RL-4C      | QS-180       | BA-ICE-HF        | BA-ICE-M-HF      | 254NM-HF     | 260223R-001 |
| SHFM-180/2  | SYS, 183GPM PROFESSIONAL+ 230V CEE7/7   | S950RL-4C      | QS-180       | BA-ICE-HF        | BA-ICE-M-HF      | 254NM-HF     | 260223R-002 |
| SHFM-180/2A | SYS, 183GPM PROFESSIONAL+ 230V AS3112   | S950RL-4C      | QS-180       | BA-ICE-HF        | BA-ICE-M-HF      | 254NM-HF     | 260223R-003 |
| SHFM-180/2B | SYS, 183GPM PROFESSIONAL+ 230V BS1363   | S950RL-4C      | QS-180       | BA-ICE-HF        | BA-ICE-M-HF      | 254NM-HF     | 260223R-004 |

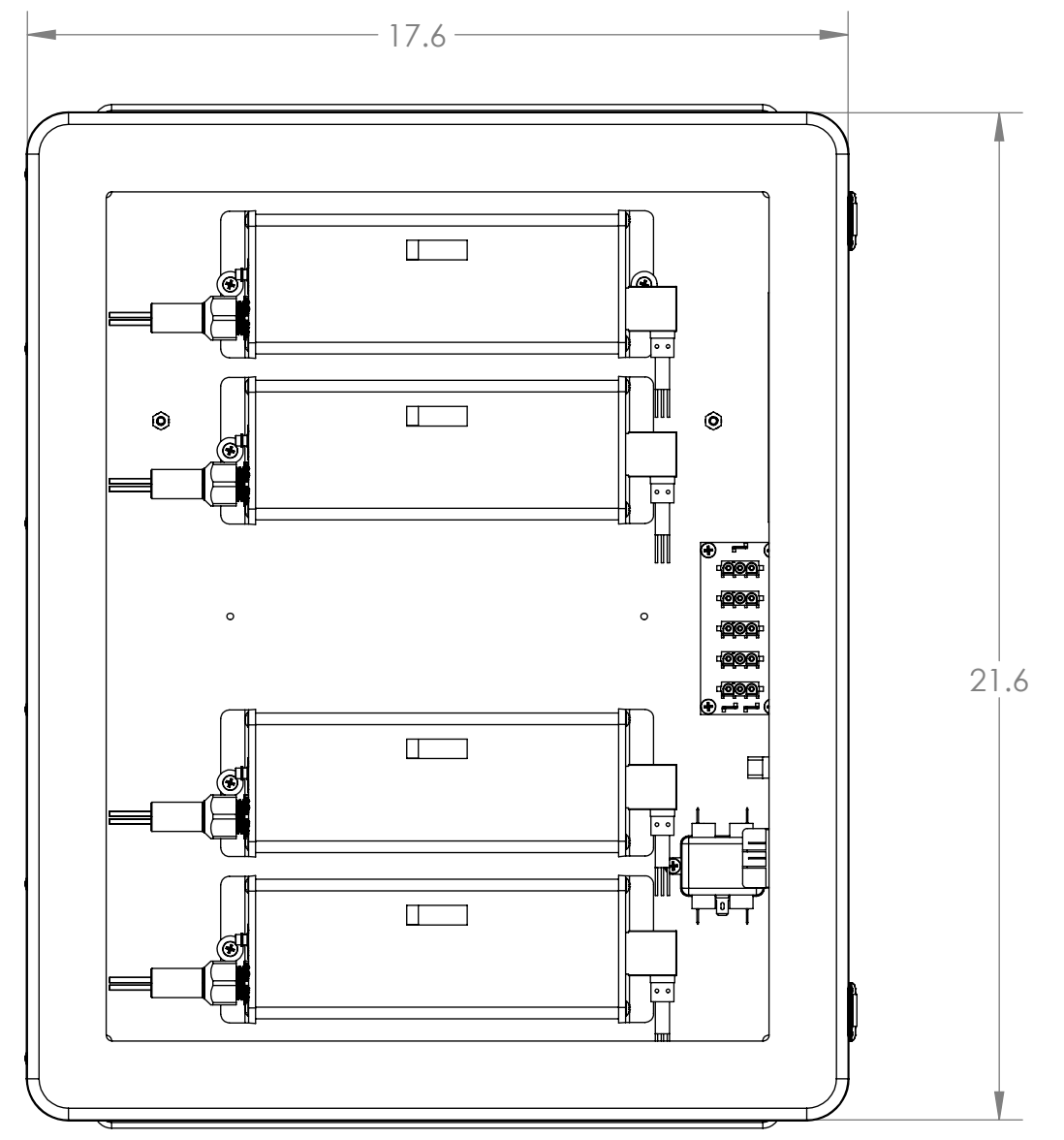
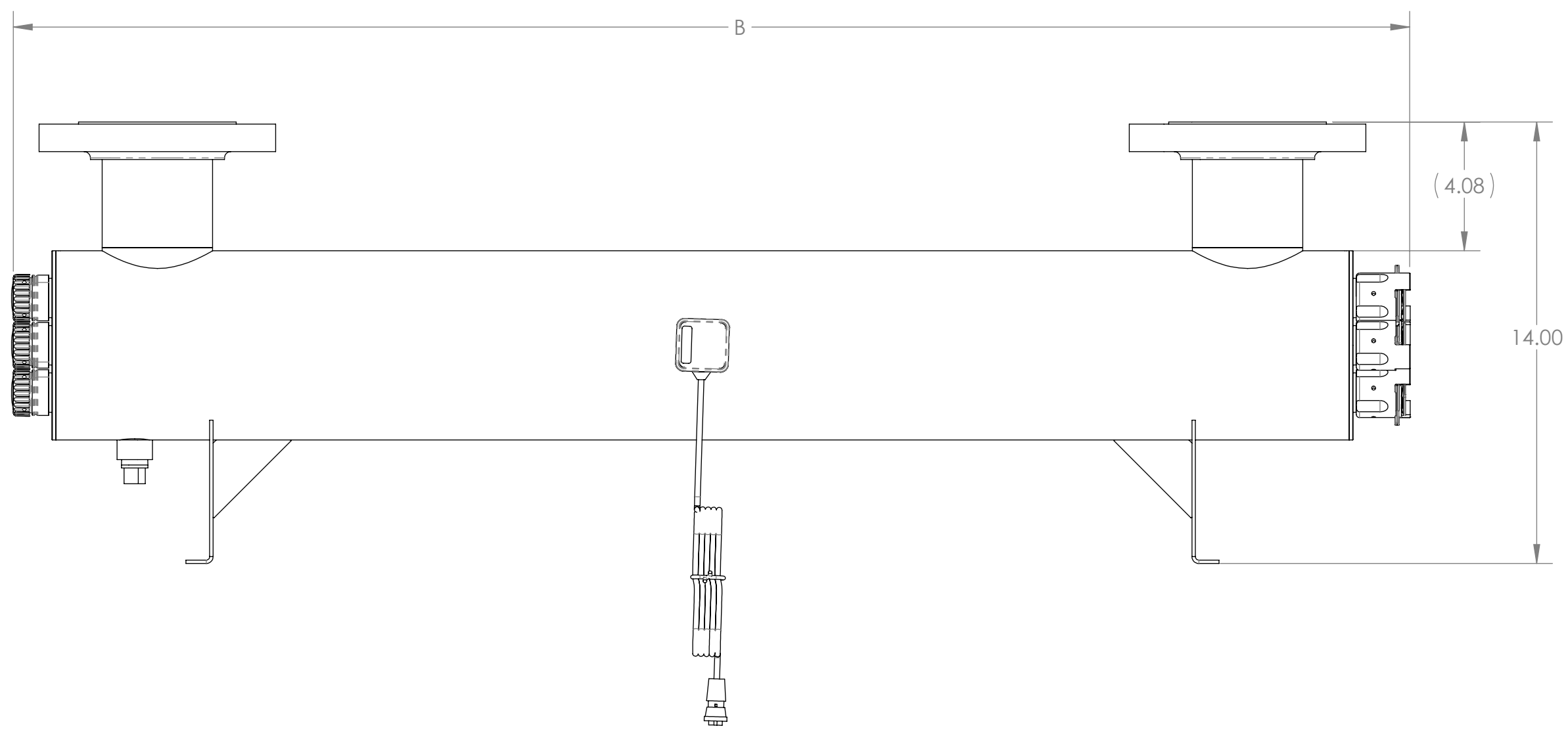
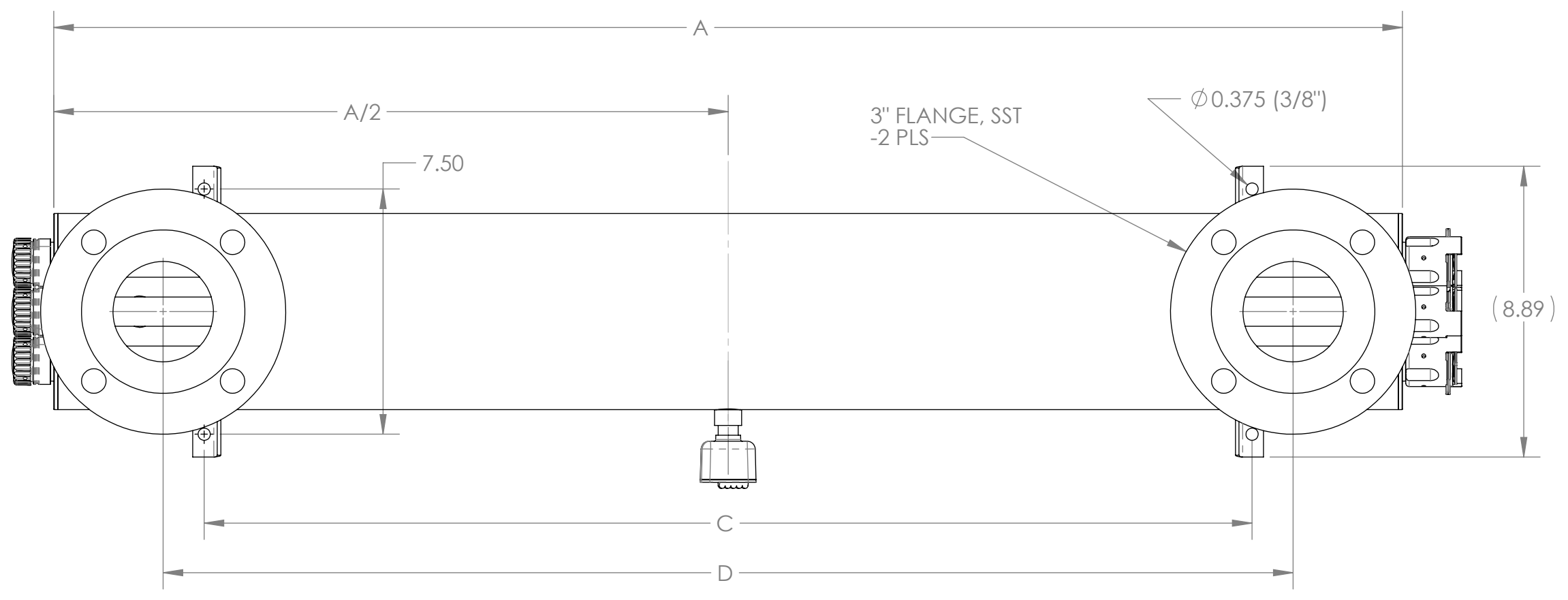


**NOTES:**

1. THESE SYSTEMS HAVE BEEN INVESTIGATED BY UL IN ACCORDANCE WITH:
  - UL 979-STANDARD FOR WATER TREATMENT APPLIANCES
  - CAN/CSA C22.2 No. 68-09-STANDARD FOR MOTOR -OPERATED APPLIANCES (HOUSEHOLD AND COMMERCIAL)
2. THESE SYSTEMS USE ALL RoHS CERTIFIED MATERIALS
3. THESE SYSTEMS HAVE BEEN BUILT IN ACCORDANCE TO NSF/ANSI 61 ANNEX G FOR LOW LEAD
4. THE LAMPS USED IN THESE SYSTEMS ARE IMERC AND SOR/2014-254 REGISTERED

|   |   |  |                     |
|---|---|--|---------------------|
| <p><b>UNLESS OTHERWISE SPECIFIED:</b><br/>DO NOT SCALE DRAWING<br/>INTERPRET DIMENSIONS AND TOLERANCES PER ASME Y14.5M-2009<br/>DIMENSIONS ARE IN INCHES<br/>TOLERANCES APPLY AS SHOWN BELOW:<br/>2 PL DEC ± 0.01<br/>3 PL DEC ± 0.005<br/>ANGLE ± 1.0<br/>REMOVE ALL BURRS, ALL CORNERS R 0.010" OR BREAK EDGE.  CRITICAL CHARACTERISTIC<br/>THIRD ANGLE PROJECTION<br/></p> | <p>COPYRIGHT BY VIQUA, , ALL RIGHTS RESERVED.</p>   | <p><b>VIQUA</b><br/>A TROJAN TECHNOLOGIES BUSINESS<br/>425 CLAIR ROAD WEST, GUELPH, ONTARIO, CANADA, N1L-1R1</p> |                     |
|   | <p><b>SolidWorks</b> MAINTAINED DATA<br/>CHANGES SHALL BE INCORPORATED ELECTRONICALLY</p> | <p>DESCRIPTION<br/><b>SYSTEM, HI-FLO</b></p>   |                     |
| <p>DRAWN BY DJ<br/>CREATED ON 2013-12-03<br/>RELEASE LOG # 13-R212</p>  | <p>MASS: 66.211 lbs</p>   | <p>SCALE: 1:8</p>  | <p>SHEET 1 OF 2</p> |

| z              | DIM "A" | DIM "B" | DIM "C" | DIM "D" |
|----------------|---------|---------|---------|---------|
| 140 GPM HI-FLO | 33"     | 36"     | 23.80"  | 26.31"  |
| 180 GPM HI-FLO | 41.25"  | 44.25"  | 32.05"  | 34.56"  |



|   |   |   |  |
|---|---|---|--|
| <p><b>UNLESS OTHERWISE SPECIFIED:</b><br/>DO NOT SCALE DRAWING<br/>INTERPRET DIMENSIONS AND TOLERANCES PER ASME Y14.5M-2009<br/>DIMENSIONS ARE IN INCHES<br/>TOLERANCES APPLY AS SHOWN BELOW:<br/>2 PL DEC ± 0.01<br/>3 PL DEC ± 0.005<br/>ANGLE ± 1.0<br/>REMOVE ALL BURRS, ALL CORNERS R 0.010" OR BREAK EDGE.  CRITICAL CHARACTERISTIC</p> <p>THIRD ANGLE PROJECTION</p> | <p>COPYRIGHT BY VIQUA, .<br/>ALL RIGHTS RESERVED.</p>                                     | <br>A TROJAN TECHNOLOGIES BUSINESS<br>425 CLAIR ROAD WEST, GUELPH, ONTARIO, CANADA, N1L-1R1<br>DESCRIPTION<br><b>SYSTEM, HI-FLO</b> |  |
|   | <p><b>SolidWorks</b> MAINTAINED DATA<br/>CHANGES SHALL BE INCORPORATED ELECTRONICALLY</p> | <p>DRAWN BY DJ<br/>CREATED ON 2013-12-03<br/>RELEASE LOG # 13-R212</p>  | <p>DWG NO. 140105RG<br/>REVISION J</p> |